

## Using Windows:


1. Visit <https://www.fortinet.com/support/product-downloads> and locate the **Forticlient VPN** located towards the bottom of the page and select the appropriate Operating System (**Windows**)

### FortiClient VPN

The VPN-only version of FortiClient offers SSL VPN and IPsecVPN, but does not include any support. Download the best VPN software for multiple devices.


#### Remote Access

- ✓ SSL VPN with MFA
- ✓ IPSEC VPN with MFA




Download VPN for Windows

DOWNLOAD




Download VPN for MacOS

DOWNLOAD




Download VPN for Linux

DOWNLOAD .rpm




Download VPN for iOS

DOWNLOAD



Download VPN for Android

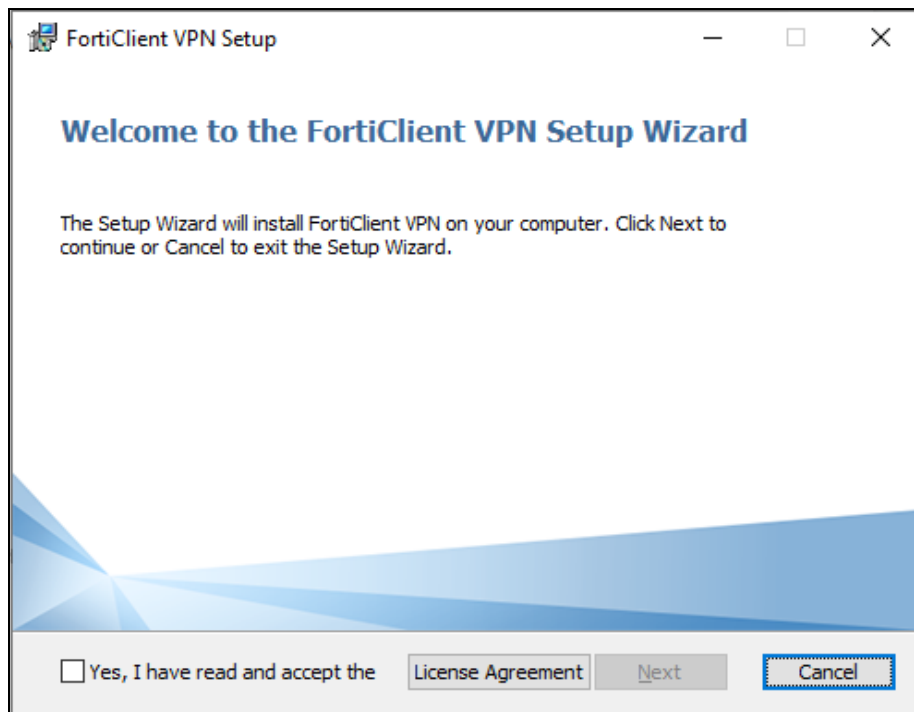
DOWNLOAD



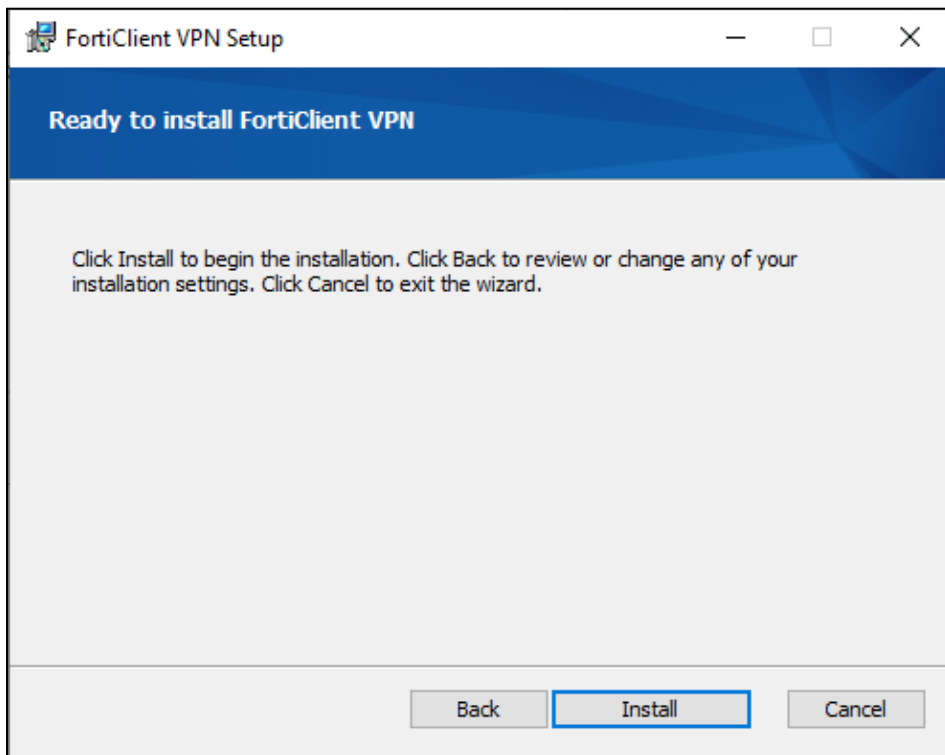
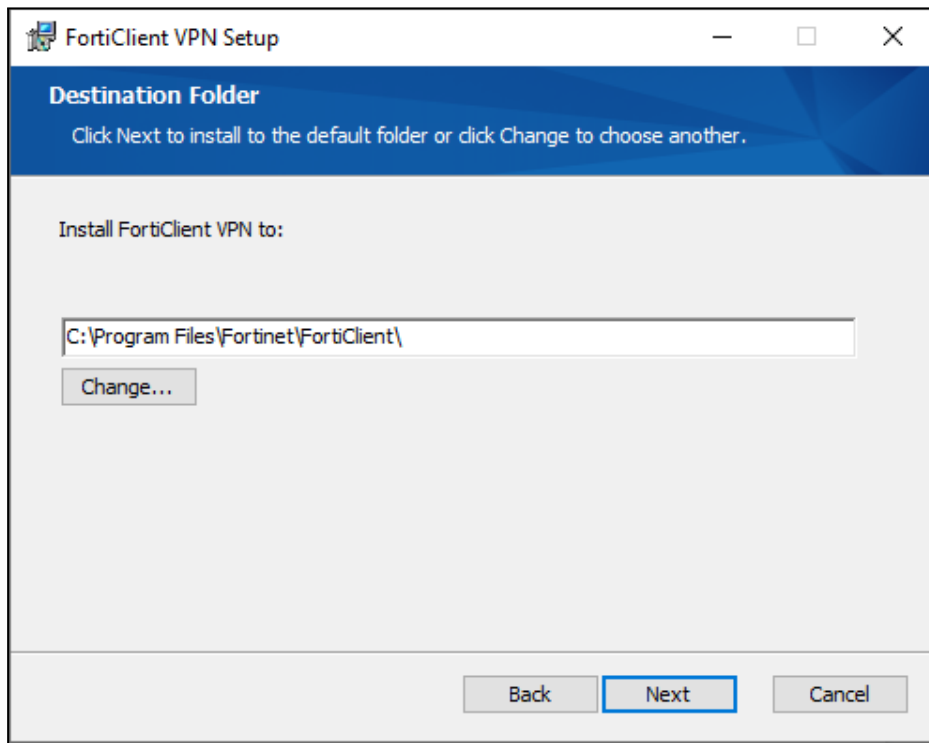
Download VPN for Linux

DOWNLOAD .deb

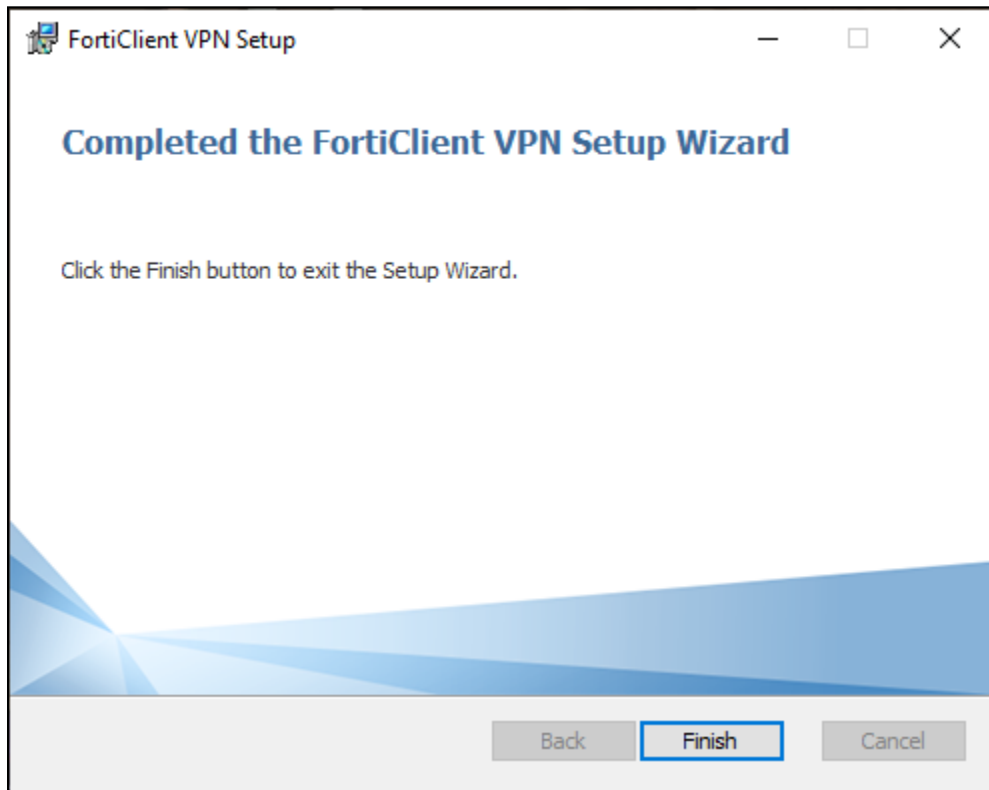
2. Run the downloaded installer and proceed through the setup wizard.



3. Read and accept the license agreement, then select the folder location and click **Next**, then **Install**



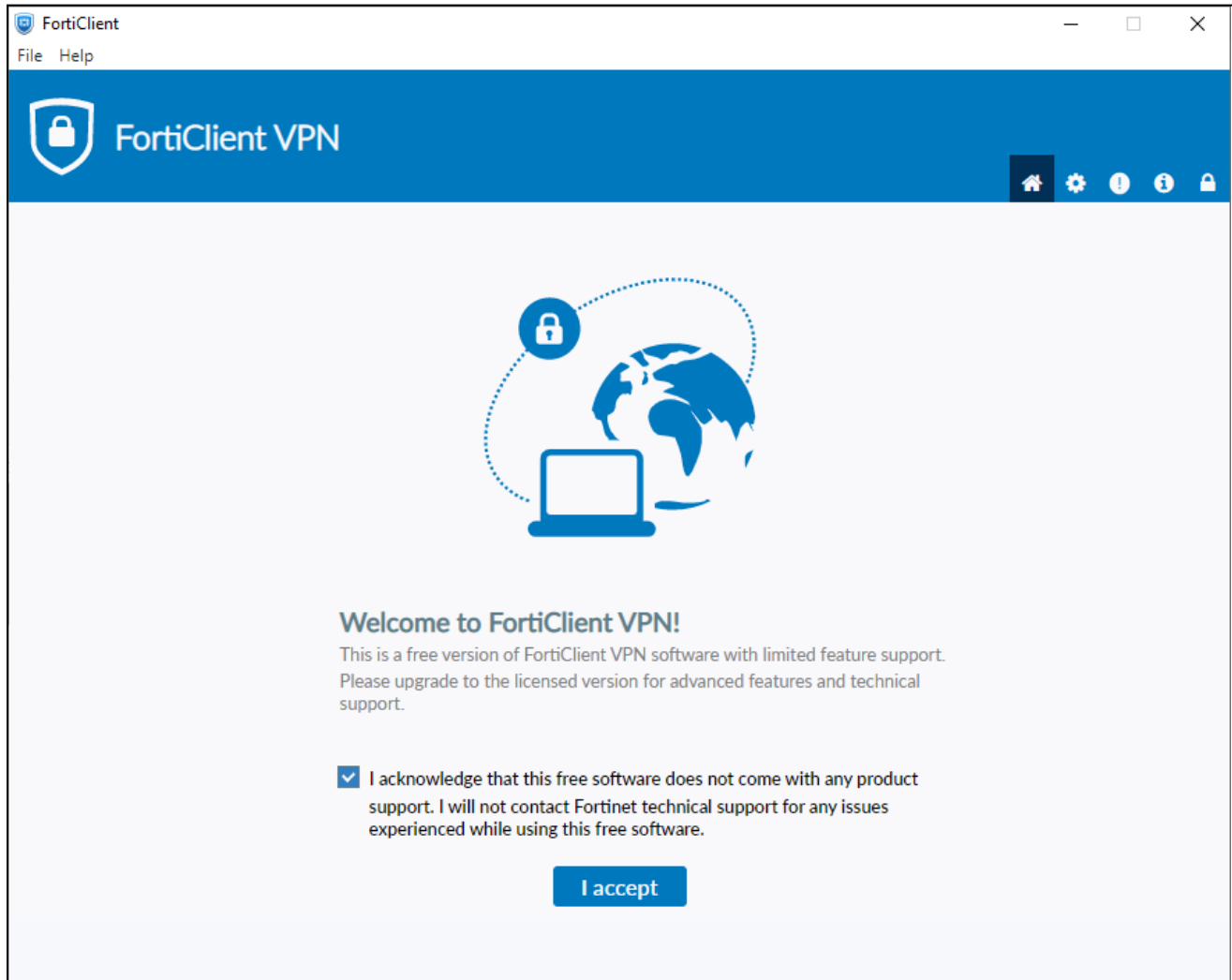
4. Once the **Installation** is finished click **Finish**.



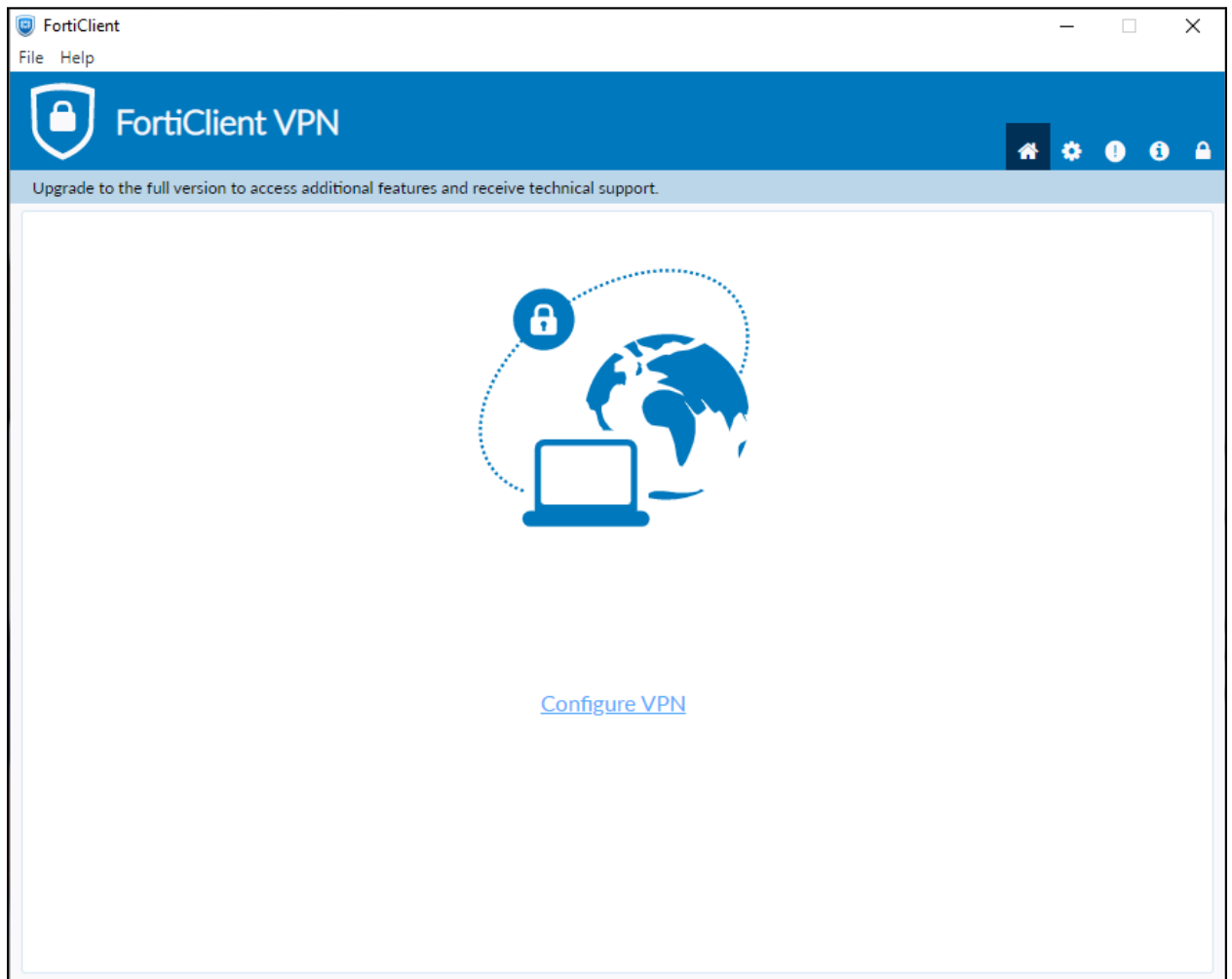
5. Locate and **Double-Click** the “Forticlient VPN” shortcut on your **desktop**



6. Once the Client is open click the **box located next to the acknowledged agreement** and click **“I accept”**.



7. Click **Configure VPN**.



8. Enter the **configurations** for the VPN as follows:
- a. VPN: Select **IPsec VPN**.
  - b. Connection Name: **Name of your choosing** (e.g. **CS VPN**)
  - c. Description: **Any**
  - d. Remote Gateway: **128.82.11.11**
  - e. Authentication Method: **Pre-shared key**
  - f. Pre-shared key: **DnS6fS7Zm^&\***

### New VPN Connection

VPN SSL-VPN **IPsec VPN** XML

Connection Name

Description

Remote Gateway  ✕  
✚ Add Remote Gateway

Authentication Method Pre-shared key ▼

Authentication (XAuth) ☒ Prompt on login ☐ Save login ☐ Disable

Failover SSL VPN [None] ▼

✚ Advanced Settings

Cancel Save

8. Click the **+** next to **Advanced Settings**. (Advanced Settings should be set as followed)
  - a. Click the **+** next to **VPN Settings**:
    - i. IKE: **Version 1**.
    - ii. Mode: **Main**.
    - iii. Options: **Mode Config**.

**— VPN Settings**

IKE ☒ Version 1 ☐ Version 2

Mode ☒ Main ☐ Aggressive

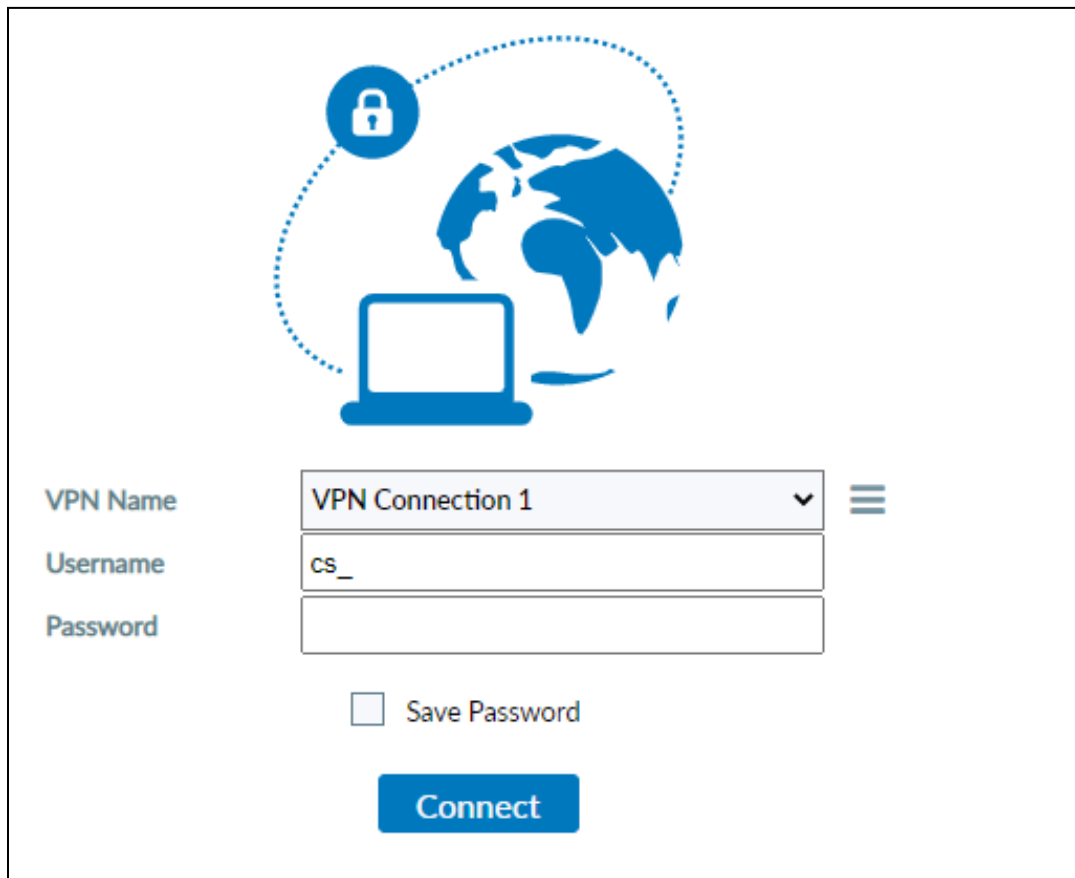
Options ☒ Mode Config ☐ Manually Set ☐ DHCP over IPsec

Yeah

9. Once these settings are applied click **Save**.




10. Select your created VPN Connection from the **drop down menu**. Enter your ODU **CS Credentials** and click **Connect**.



The interface features a central graphic with a blue padlock icon, a globe, and a laptop, all connected by a dotted line. Below this graphic are three input fields: 'VPN Name' with a dropdown menu showing 'VPN Connection 1', 'Username' with the text 'cs\_', and 'Password' which is empty. To the right of the dropdown menu is a hamburger menu icon. Below the input fields is a checkbox labeled 'Save Password' which is unchecked. At the bottom is a blue 'Connect' button.

11. After clicking connect, you will receive a DUO push notification to your mobile device to confirm the Authentication process.  
(**IMPORTANT:** Some logon instances will not show a Push Notification. Be sure to check the Duo Mobile app for pending authentications.)

12. **Note:** To edit or add a connection click the option button on the right side of the VPN Name selection box:



The diagram shows a blue icon of a globe with a laptop in front of it. A dotted line connects the laptop to a padlock icon, symbolizing a secure connection.

VPN Name      VPN Connection 1 ▼

Username     

Password     

☐ Save Password

[Connect](#)

**Options menu:**

- Add a new connection
- Edit the selected connection
- Delete the selected connection



## Using Mac:


1. Visit <https://www.fortinet.com/support/product-downloads> and locate the **FortiClient VPN** located towards the bottom of the page and select the **(Download for MacOS)** option.

### FortiClient VPN

The VPN-only version of FortiClient offers SSL VPN and IPsecVPN, but does not include any support. Download the best VPN software for multiple devices.


#### Remote Access

- ✓ SSL VPN with MFA
- ✓ IPSEC VPN with MFA




Download VPN for Windows

DOWNLOAD




Download VPN for MacOS

DOWNLOAD




Download VPN for Linux

DOWNLOAD .rpm




Download VPN for iOS

DOWNLOAD



Download VPN for Android

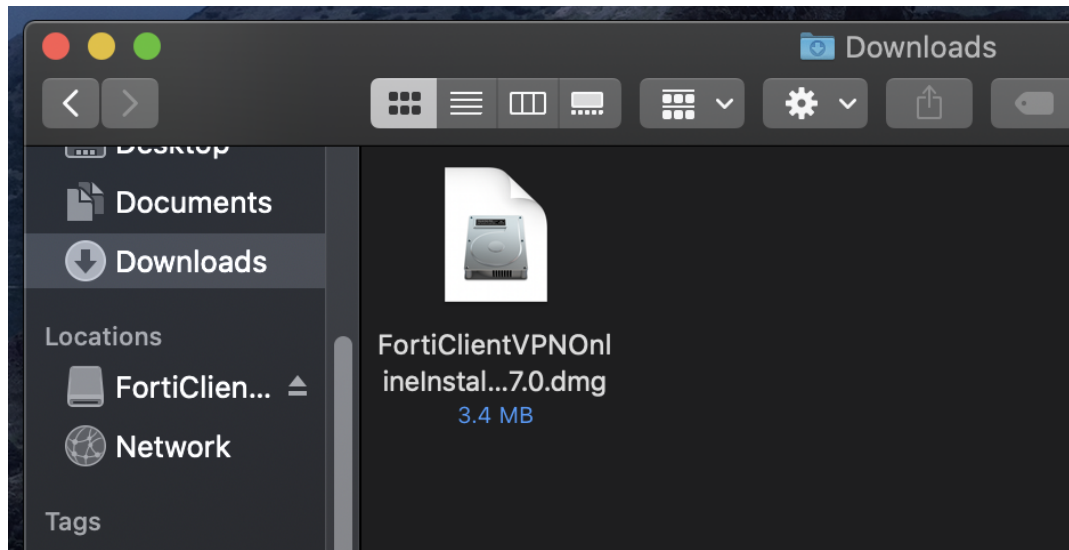
DOWNLOAD



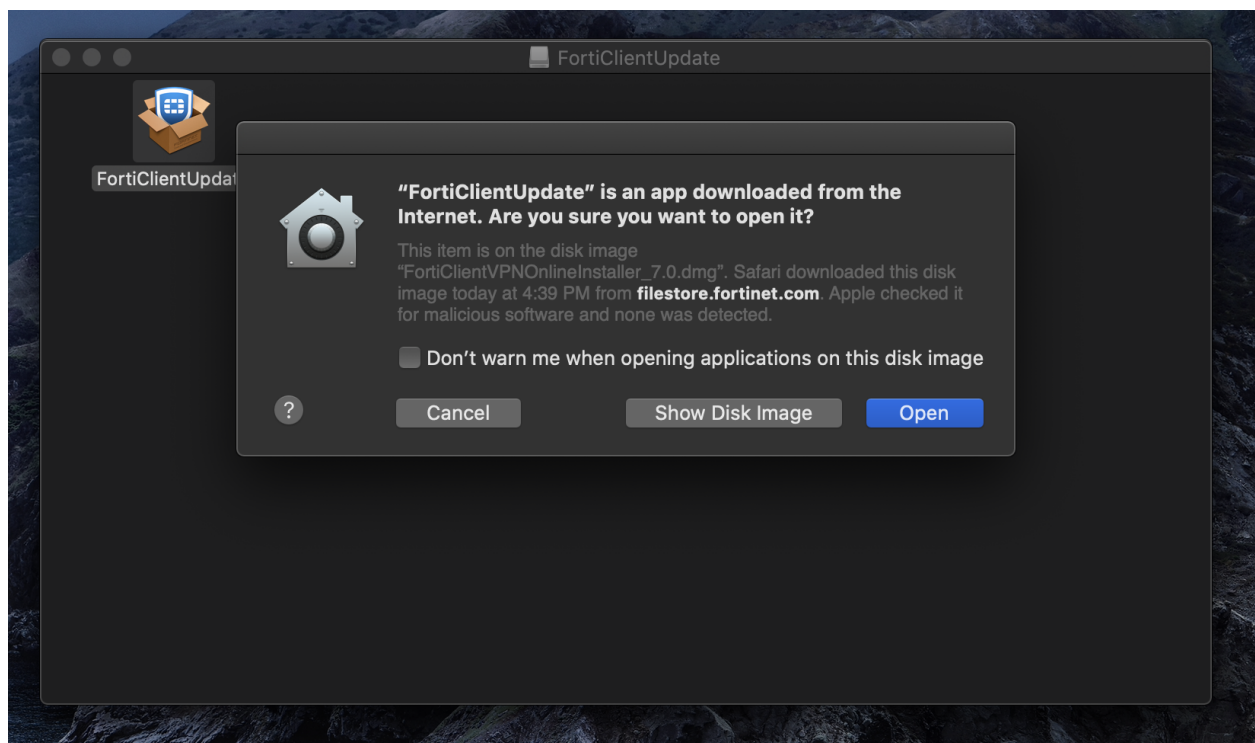
Download VPN for Linux

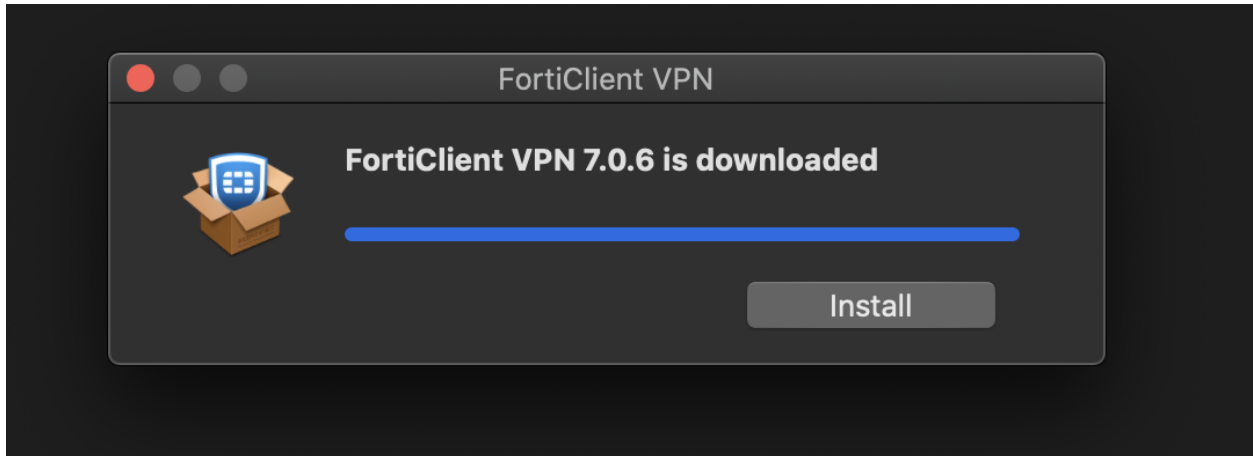
DOWNLOAD .deb

2. Open and **run** the downloaded **FortiClient.dmg** file which will proceed to download the **FortiClientUpdate** package.

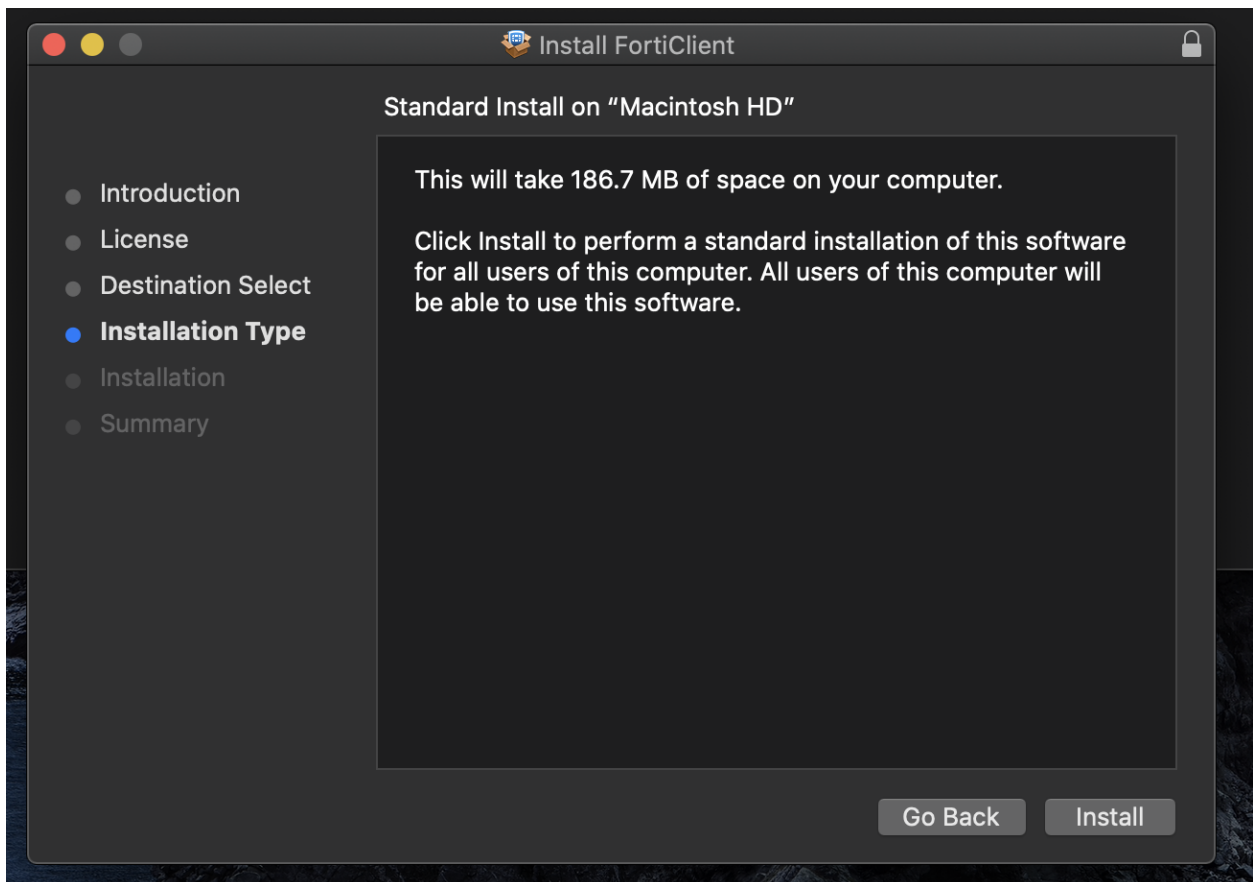


3. **Run** the newly downloaded **FortiClientUpdate** package. It will ask for permission to download and install the app.

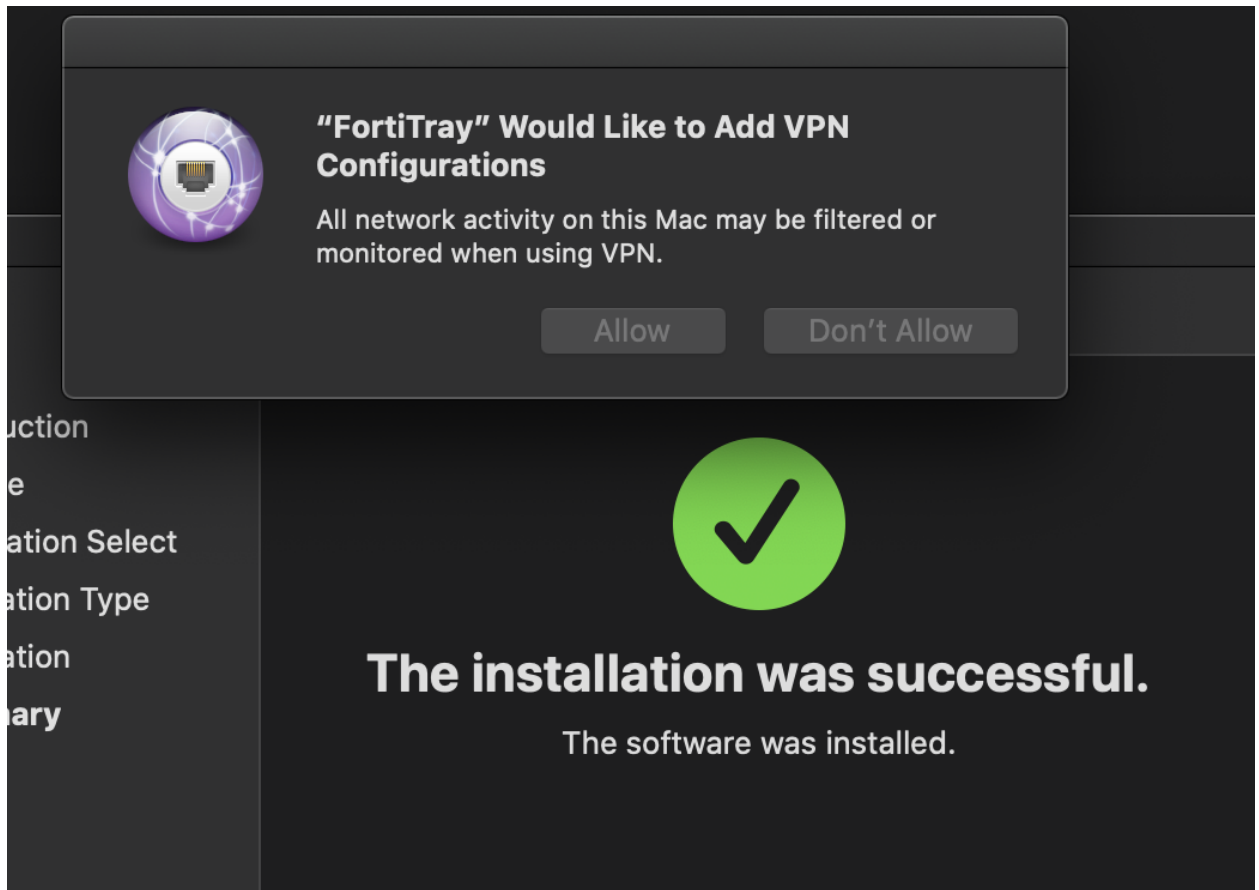




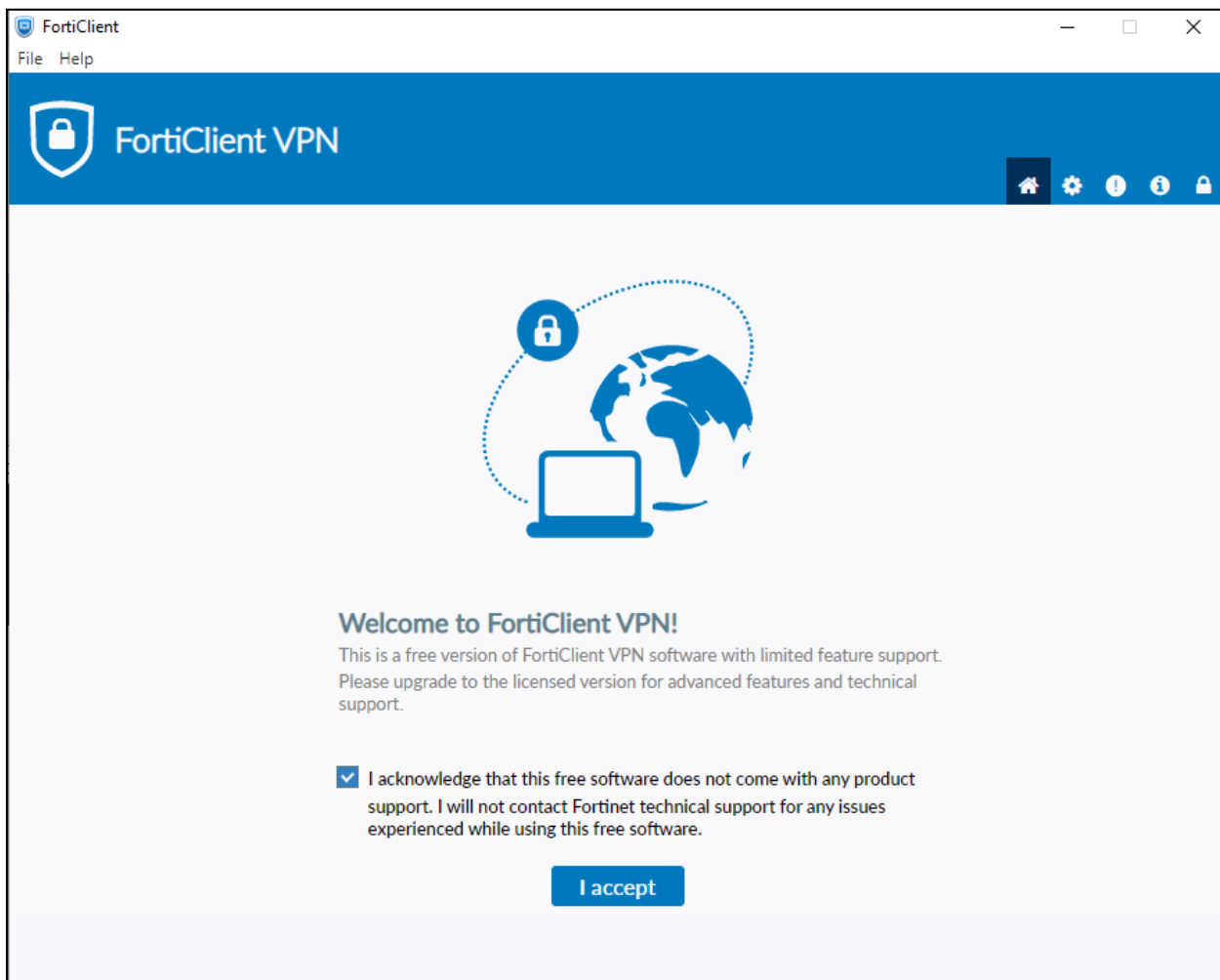
4. **Proceed** with the installation wizard, choosing install destination and accepting license agreements. Finally, click **install**.



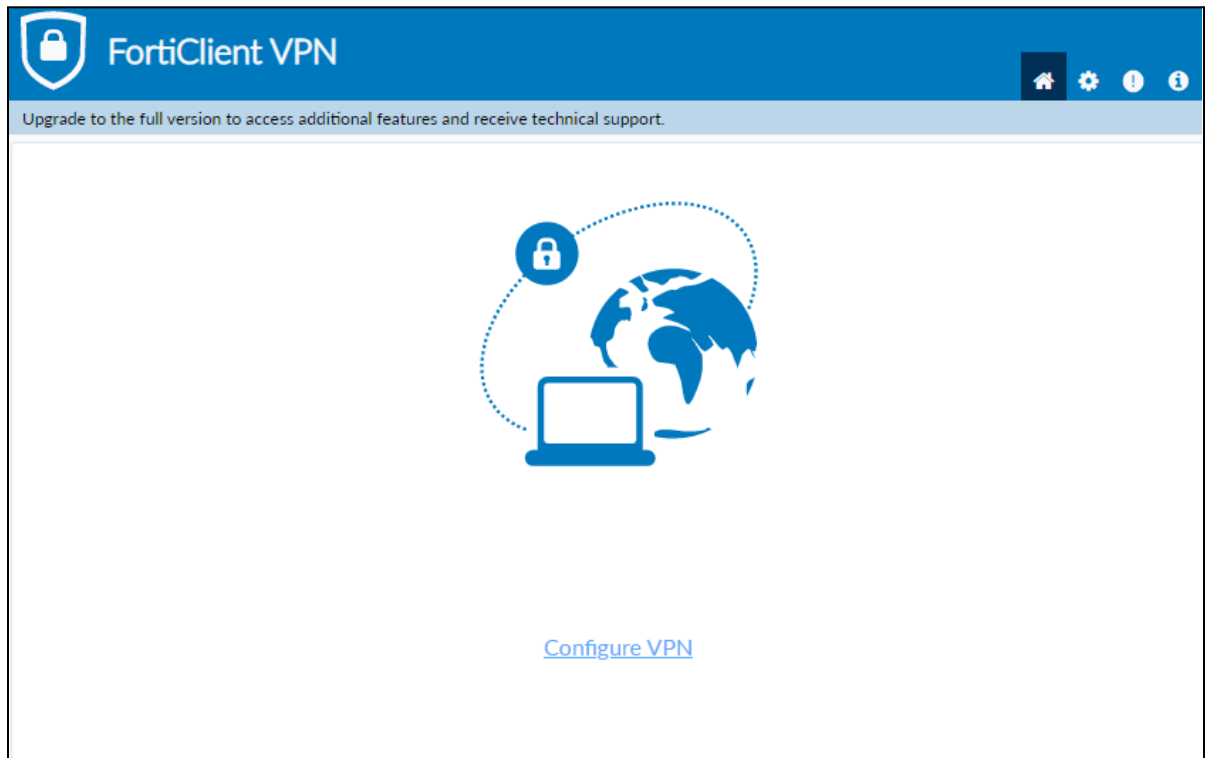
5. After a successful installation, it will ask for permission to add **FortiTray VPN Configurations** to your device. Click **Allow** and proceed.



6. After it has been installed, search Finder for the newly installed **FortiClient**. Once the Client is open click the **box located next to the acknowledged agreement** and click **"I accept"**.



7. Click **Configure VPN**.



8. Enter the **configurations** for the VPN as follows:
- a. VPN: Select **IPsec VPN**.
  - b. Connection Name: **Name of your choosing** (e.g. **CS VPN**)
  - c. Description: **Any**
  - d. Remote Gateway: **128.82.11.11**
  - e. Authentication Method: Pre-shared key
  - f. Pre-shared key: **DnS6fS7Zm^&\***

### New VPN Connection

VPN SSL-VPN **IPsec VPN** XML

Connection Name

Description

Remote Gateway  ✕  
✚ Add Remote Gateway

Authentication Method Pre-shared key ▼

Authentication (XAuth) ☒ Prompt on login ☐ Save login ☐ Disable

Failover SSL VPN [None] ▼

✚ Advanced Settings

Cancel Save

9. Click the **+** next to **Advanced Settings**. (Advanced Settings should be set as followed)

g. Click the **+** next to **VPN Settings**:

- i. IKE: **Version 1**.
- ii. Mode: **Main**.
- iii. Options: **Mode Config**.

**— VPN Settings**

IKE ☒ Version 1 ☐ Version 2

h. Mode ☒ Main ☐ Aggressive

**— Phase 1**

IKE Proposal Encryption AES128 ▼ Authentication SHA1 ▼

Encryption AES256 ▼ Authentication SHA256 ▼

DH Group ☐ 1 ☐ 2 ☒ 5 ☐ 14 ☐ 15

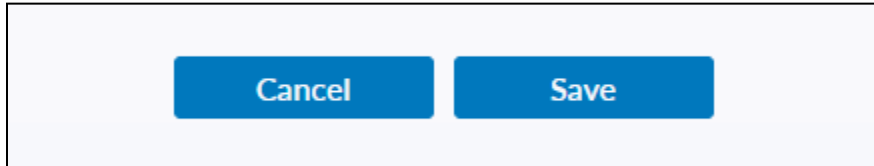
☐ 16 ☐ 17 ☐ 18 ☐ 19 ☐ 20

Key Life  sec

Local ID

☒ Dead Peer Detection

13. Once these settings are applied click **Save**.



14. Select your created VPN Connection from the **drop down menu**. Enter your ODU **CS Credentials** and click **Connect**.





VPN Name  
Username  
Password

VPN Connection 1 ▼

Personal VPNs

VPN Connection 1



☐ Save Password

Connect



VPN Name  
Username  
Password

VPN Connection 1 ▼

cs\_



☐ Save Password

Connect

15. After clicking connect, you will receive a DUO push notification to your mobile device to confirm the Authentication process. (**IMPORTANT:** Some logon instances will not show a Push Notification. Be sure to check the Duo Mobile app for pending authentications.)